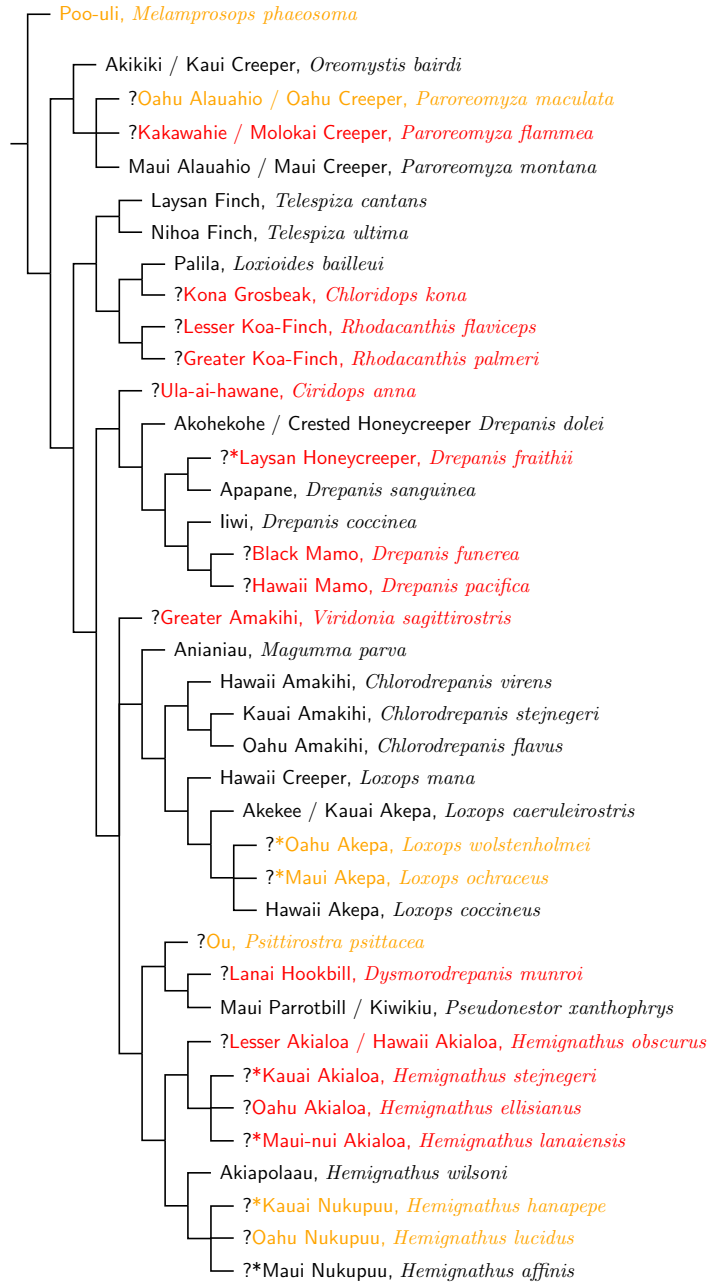


## Drepanidini: Hawaiian Honeycreepers



Notes: Stars denote recent splits. Red taxa are extinct, orange probably extinct. Question marks indicate that the species was not included in a genetic analysis. In that case the osteology-based phylogeny of James (2004) has generally been used to place the species on the tree.

Sources: James (2004), Knowlton et al. (2014), Lerner et al. (2011). Older versions also used Arnaiz-Villena et al. (2007b), Fleischer et al. (2001), Pratt (2001), Reding et al. (2009).